

INSTRUCTIONS FOR USE

IFU CODE : 30

iB-ER

PROSTHETIC



Swipe Foot



VACX Foot



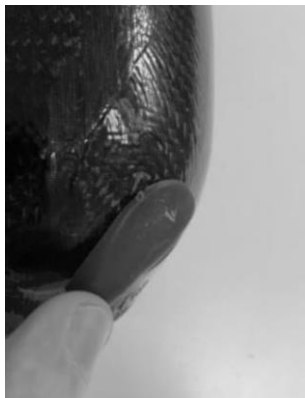
AbsorbX Foot



Fig. 1 (VACX Foot)



Fig. 2 (VACX Foot)



INFORMATION



Last Update: 01.09.2024

- Please read this document carefully before using the product.
- Instruct the user in the appropriate and safe use of the product.
- Follow the safety instructions to abstain injuries and damage to the product.
- Please keep this document in a safe place.

Contents

1. Swipe Foot.....	1
2. VACX Foot.....	2
3. AbsorbX Foot.....	4
4. Installation of The Carbon Foot	5
5. Maintenance and Assembling	5
6. General Safety Instruction.....	6
7. Environmental Conditions	7
8. Service Life.....	7
9. Foot Shell - Low Height.....	8

1. Swipe Foot

Swipe Foot is a unique carbon foot with a polycentric ankle design. Provides superior dorsiflexion and plantar flexion movements on each step. Each blade of the feet contributes through stance phase by flexing to a point by center of rotation of the polycentric design. Generates further toe-off energy for smooth and effort-free steps. The product is suggested for activity level 3 and activity level 4.

1.1 Properties

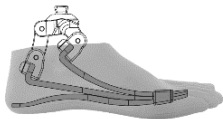
Sizes	24 to 28
Advised Activity Level	K3 – K4
Max User Weight	105 Kg
Mean Product Length	120 mm
Mean Product Weight	550 Gr

1.2 Weight Categorization

Category	CAT-1	CAT-2	CAT-3	CAT-4
Patient Weight (Kg)	65-75 kg	75-85 kg	85-95 kg	95-105 kg

1.3 Order Example

Swipe Foot should be used together with low height Foot Shell. Foot Shell should be ordered separately. Please see the last section for low height foot shell in this manual.



Size	24 to 28
Order Example	SW26-CAT2 {Swipe Foot} {Size}-{Category}



ATTENTION!

This product should be used with the Low Height Foot Shell described on page 7.

2. VACX Foot

VACX is a carbon fiber foot which has been developed based on the Winged Foot Structure.

“Active Vacuum Unit” of the VAC-100 product has been placed on the Winged Foot to generate an elevated vacuum inside of the socket.

Generated vacuum occurs between user's liner and the socket to prevent pistoning movement and grip the stump firmly.

This system cancels out the need of using locks and silicone liners with the pin system.

Absorbs high reaction forces of the ground and creates vacuum on each step. Totally Multi-axial body, allows 10 degrees of Inversion & Eversion.

Vacuuming the Socket

The socket should be sealed with sleeves to create vacuum-able environment inside. Once the environment is sealed, which is compressed and released during the walking, the vacuum unit draws air from the socket through the one-way valve and evacuates it through the pump. After multiple steps of the user, 15 in. Hg (around 0.5 bar) vacuum is created in the sealed socket.

2.1 Properties

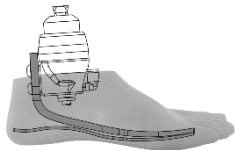
Sizes	23 to 28
Advised Activity Level	K3 – K4
Max User Weight	105 Kg
Mean Product Length	160 mm
Mean Product Weight	740 Gr

2.2 Weight Categorization

Category	CAT-1	CAT-2	CAT-3	CAT-4
Patient Weight (Kg)	65-75 kg	75-85 kg	85-95 kg	95-105 kg

2.3 Order Example

VACX Foot should be used together with low height Foot Shell. Foot Shell should be ordered separately. Please see the last section for low height foot shell in this manual.



Size	23 to 28
Order Example	VAC26-CAT2 {VACX Foot} {Size}-{Category}



ATTENTION!

This product should be used with the Low Height Foot Shell described on page 7.

2.4 Installation

To discharge the air and provide vacuum zone inside of the socket, the socket should be drilled with the size of “black socket connector” that comes together with the VACX Foot Product (Fig. 1).

The hose of the connector should be putted inside of the socket.

The hose of the connector and the vacuum hose can be cut to any desired length. It's important to not make it too short, this might cause extra tension, instead slightly lose hose can be wrapped around the prosthesis.

Once the connector inside the of the socket, it should be glued to the socket, like in the Fig 2.

It's important to slightly grind the surface around the head cap of the socket connector, to increase the grab for the glue.



Important Tip 1

VACX Foot comes in totally adjusted position and vacuum value is set by the fabrication (≈ -0.5 Atm). Therefore, it doesn't require any special adjustment to provide vacuum pressure.

2.5 Care & Cleaning

The vacuum hose should be de-attached at least every 3 months and should be gently cleaned with water. Any visible particle in the hose or socket connector (on the socket), should be removed to provide the stabile airflow.



Important Tip 2

Inside of the Hose and connector can be cleaned with compressor gun (with air) to remove particles.

3. AbsorbX Foot

AbsorbX Foot is a carbon fiber foot which has been developed based on the Winged Foot Structure.

It absorbs the high reaction forces of the ground and creates a cushioning feeling with every step.

Totally Multi-axial body, allows 10 degrees of Inversion & Eversion.

The AbsorbX Foot is essentially identical to the VACX foot, except for the following: the vacuum cable and elbow are not included in the AbsorbX foot, and it does not have a vacuum feature.

3.1 Properties

Sizes	23 to 28
Advised Activity Level	K3 – K4
Max User Weight	105 Kg
Mean Product Length	160 mm
Mean Product Weight	740 Gr

3.2 Weight Categorization

Category	CAT-1	CAT-2	CAT-3	CAT-4
Patient Weight (Kg)	65-75 kg	75-85 kg	85-95 kg	95-105 kg

3.3 Order Example

AbsorbX Foot should be used together with low height Foot Shell. Foot Shell should be ordered separately. Please see the last section for low height foot shell in this manual.



Size	23 to 28
Order Example	ABS26-CAT2 {AbsorbX Foot} {Size}-{Category}



ATTENTION!



This product should be used with the Low Height Foot Shell described on page 7.

4. Installation of The Carbon Foot

1. During the installation of the foot, it is recommended to mount it to the pipe adapter first (In this way, it is easier to attach the foot shell to the carbon foot).
2. The carbon foot must first be inserted through the nose into the shell.
3. Then, it should be ensured that the heel part is fully seated in the heel socket in the shell.

5. Maintenance and Assembling

Cleaning process of the Foot Shell can be done easily by damp cloth. Rub the cloth to the surfaces of Foot Shell. Warm water also helps to clean its surfaces.

<p>Foot Shell is a disposable prosthetic product and can be worn out after usage of 6 month to 1 year depending on activity of patient. In this case, please replace the Foot Shell immediately to prevent any damage on the Carbon Foot. Removing the Carbon Foot from Foot Shell can be easily done with Foot Shell Removal Tool (FST) by gently pushing out the foot by help of the tool.</p>	 <p>Foot Shell Tool (FST)</p>
<p>Swipe Foot, VACX Foot, AbsorbX Foot should be used together with prosthetic socks. Before putting the Carbon Foot in the Foot Shell, please be sure to put the Foot in its sock firstly. Spectra sock will prevent wearing of the foot shell, as well as will prevent any possible noises during the walking.</p>	 <p>Spectra Sock</p>

6. General Safety Instructions

<p>Do not use this product without reading the instruction of use. Take note of the safety warnings in this user manual.</p>
<p>These products are for one patient use only. It should not be used by other patients.</p>
<p>Avoid over-straining the product. Please inform the patient.</p>
<p>Avoid using these products in unsuitable environmental conditions. If the product has been exposed to unsuitable environmental conditions, check for damage. Protect the product against burns.</p>
<p>Any assembly and modification to be made on the carbon foot and foot shell should be done by a specialist technician in a prosthetic orthotics workshop. Sharp tools should not be used for assembly and disassembly. These tools can cause damage to the carbon parts and/or the foot cover.</p>

<p>Mechanical Damage to the product Be careful when working with the product. Do not scrape the foot prosthesis and foot shell.</p>
<p>Use the prosthesis in appropriate combinations Do not attempt to assemble parts that are not suitable for these products.</p>
<p>If the product has been damaged or function has changed do not use the product If there is a loss of function in the foot, the foot should not be used. This loss of function may manifest as changes in flexing resistances and, in some cases, unusual noises.</p>
<p>Prosthetic Stocking (Spectra Sock), Foot Shell - Low Height and Carbon Foot should be used together. These carbon feet should be used together with prosthetic sock. Before putting the Foot into the Foot Shell, please make sure to put the Foot into the sock first. Prosthetic sock will prevent wearing of the foot shell, as well as will prevent any possible noises during the walking.</p>

7. Environmental Conditions

Acceptable Environmental Conditions
Temperature range for use: -10 °C to +60°C
Allowable relative humidity 0 % to 90 %, non-condensing

Unsuitable Environmental Conditions
Fresh water, salt water, perspiration, urine, acids
Mechanical vibrations or impact
Dust, sand, highly hygroscopic particles (e.g., talcum)

8. Service Life

Swipe Foot, VACX Foot, AbsorbX Foot have been tested in in-house with 2 million load cycles according to ISO 22675. The service life of the product is around 2-3 years. Of course, this time varies according to the daily activity level of the user. The service life of the product is not a warranty period.

9. Foot Shell - Low Height



- Contains all material specs of Standard Height Foot Shell.
- Only difference is height of the shell: 15 mm shorter.
- Connection cap is not available for the Low Height Foot Shells.
- Specially produced by Thermoplastic Rubber (TPR)
- 60 Shore hardness.
- Two different color options (Beige and Brown)



Code	Foot Size	Heel Height	Color	Side
LAS-23L/R	23	10 mm	Beige	L/R
LAS-24L/R	24			
LAS-25L/R	25			
LAS-26L/R	26			
LAS-27L/R	27			
LAS-28L/R	28			
LAS-29L/R	29			

Code	Foot Size	Heel Height	Color	Side
LAB-23L/R	23	10 mm	Brown	L/R
LAB-24L/R	24			
LAB-25L/R	25			
LAB-26L/R	26			
LAB-27L/R	27			
LAB-28L/R	28			
LAB-29L/R	29			

9.1 Order Example

Size	23 to 29
Order Example for Beige Color	LAS-26-LEFT (Beige Color)(Size)-(Foot Shell Type)
Order Example for Brown Color	LAB-26-RIGHT (Brown Color)(Size)-(Foot Shell Type)

9.2 Accessory

<p>Foot Shell Removal Tool A tool for removing the foot from the foot shell. Works with all kind of carbon feet. One end is a hook type bent and the other end is a flat for applying a force. Made by stainless steel for durability and to avoid corrosion in long term.</p> <p>Code: FST Material: Stainless Steel</p>	
<p>Spectra Sock Spectra Sock made by special Fiber Glass material. High wear resistance. Suitable for all kind of carbon feet.</p> <p>Code: S-CF Material: Fiber Glass</p>	



İB-ER Makina A.Ş
Selvilitepe OSB Mah. OSB 2006. Cad. No: 13/1 45400,
Turgutlu - Manisa / Turkey

Phone : +90 (236) 312 32 00

Fax : +90 (236) 312 32 06

info@ib-er.com

www.ib-er.com



Ercan Gozuacik
Reinickendorfer Str 45 13347 Berlin GERMANY
(for regulatory affairs only)