

**INSTRUCTIONS FOR USE**

**IFU CODE : 27**

**iB-ER**  
**PROSTHETIC**

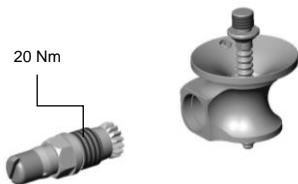


**E74**

**Shuttle Lock**

**CE**

**Fig 1. (E74)**



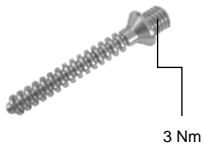
**Fig 2. (E74 Dummy Set)**



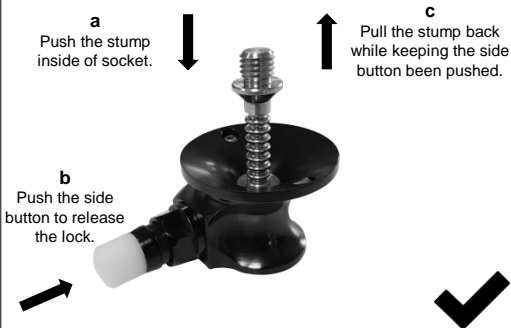
**Fig 3. (E74-Gear)**



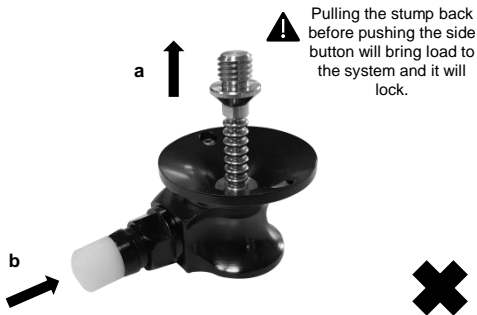
**Fig 4. (E74-Pin)**



**Fig 5. Proper Functional Way of E74**



**Fig 6. Incorrect Usage of E74**



## INFORMATION



Last Update: 01-09-2023

- Please read this document carefully before using the product.
- Instruct the user in the appropriate and safe use of the product.
- Follow the safety instructions to abstain injuries and damage to the product.
- Please keep this document in a safe place.

## Contents

1 Description & Functions.....	1
2 Assembly & Lamination .....	2
3 Maintenance .....	3
4 Scope of Delivery.....	4
5 Environmental Conditions.....	4
6 Service Life .....	4
7 General Safety Instructions .....	5
8 Warranty .....	6

# 1 Description & Functions

E74 shuttle lock can be integrated into the socket during the lamination or thermoplastic process.

Best option for patients with a contracted joint or uncommon alignment line.

This shuttle lock is not suitable for bathing prostheses.

Code	Weight	Material	Weight Limit
E74	129 gr	Aluminum	No Weight Limit

To release the pin, the white button should be pressed.



## CAUTION!

It's important to advise the patient that, to release the stump from the socket, patient should push his leg inside the socket firstly and then try to release the pin by pressing the button. So it will be released easily. On the other hand, if patient tries to take out his stump while pressing the button, system might lag and do not release the pin. So it's important to push his/her stump in the socket before pressing the button. [See Fig 5., Fig 6.]

## 2 Assembly & Lamination



### CAUTION!

Align the shuttle lock with the longitudinal axis of the residual limb to prevent unnecessary load and wear.

Advised torque levels for Pin: **3 Nm** [See Fig. 4]



### ATTENTION!

Secure screw thread with medium strength adhesive.

- Observe the recommended torque when mounting the pin to the liner.
  - Only install the pin in liners with a metal thread.
- 
- Use a rasp to straighten the positive distal end of the cast. Thus, a smooth surface will be obtained for the dummy plate (3).
  - Fix the dummy plate with the 4 screws that come with the dummy set.
  - Pull over a PVA Bag. Tie off distally in the groove of the dummy plate and cut off.
  - Apply silicone grease to the thread of the Short Dummy (1) for the E74-Gear and place it in the shuttle lock body.
  - Place the shuttle lock body with the conic dummy (4) and secure with the screw with the dummy plate (3).

- For trial assembly, slightly grease the thread of the E74-Gear with Silicone Grease.
- Degrease the E74-Gear and the shuttle lock body, secure it using a medium strength adhesive and screw it into the shuttle lock body. Tighten using a torque wrench.  
Advised Torque: **20 Nm** [See Fig. 1]



#### **ATTENTION!**

Incorrect installation of bolt connections or loosening of bolt connections can cause injury.

To avoid injury:

Clean the bolt threads before each assembly.

Apply the recommended tightening torques.

## **3 Maintenance**

- A visual inspection and functional test of the components should be performed after the first 30 days of use.
- Inspect the entire prosthesis for wear during normal consultations.
- Annual security checks should be implemented.

## 4 Scope of Delivery

Title	Quantity	Code
E74 Shuttle Lock	1	E74
Pin [See Fig 4.]	1	E74-Pin
Dummy Set for Lamination (Delrin Bodies) [See Fig 2.]	1	E74-Dummy Kit

## 5 Environmental Conditions

Acceptable Environmental Conditions
Temperature use range: -10 °C to +45°C
Humidity: Allowable relative humidity 20 % to 90 %, non-condensing

Unsuitable Environmental Conditions
Mechanical vibrations, impacts
Dust, sand, fresh water, salt water, acids, sweat and urine
Cleaning agents containing solvents

## 6 Service Life

The service life of the product is about 3 years. This duration depends on the daily activity of the user.

## 7 General Safety Instructions



### **CAUTION!**

To avoid the risk of injury and product damage, do not use for longer than the service life of the product.

Avoid using this product in unsuitable environmental conditions. If the product has been exposed to unsuitable environmental conditions, check for damage.

Do not use the product that is damaged, has limited functionality or is in doubtful condition. Ensuring that appropriate measures are taken (e.g. control, cleaning, repair, replacement by the authorized workshop or manufacturer).

To prevent mechanical damage, be careful and caution when working the product.

Use the product for a single patient to avoid injuries and product damage.

Products should be used in appropriate combinations. Using the product with unsuitable combinations may result in possible injury.

In case of feeling any space or sound, apply the rehabilitation center who installed the foot.

## 8 Warranty

IB-ER company provides the warranty for the products in case of material and production flaws. Warranty duration for the above-mentioned products are individually mentioned at below.

<b>Product Code</b>	<b>Duration After the IB-ER Invoice Date</b>
E74	18 Months

This warranty covers on only replacement and repair of failed products after assemblies performed by qualified individuals and competent institutions. This warranty is not applicable in case of following points:

- Improper use of the product, using with unsuitable conditions and fault assembly.
- Issues arising from replacement of our products with other products.



İB-ER Makina A.Ş  
Selvitepe OSB Mah. OSB 2006. Cad. No: 13/1  
45400, Turgutlu - Manisa / Turkey

**Phone : +90 (236) 312 32 00**

**Fax : +90 (236) 312 32 06**

**info@ib-er.com**

**www.ib-er.com**



Ercan Gozuacik  
Reinickendorfer Str 45 13347 Berlin GERMANY  
(for regulatory affairs only)