

DOCUMENT NAME: ENGLISH OPERATING MANUAL

DOCUMENT CODE: LT.31.01

REVISION DATE: 08.10.2013

ENGLISH OPERATING MANUAL



[www.ib-er.com](http://www.ib-er.com)

**İB-ER MAKİNA SAN. TİC. LTD. ŞTİ.**

129/9 sok. No:13

4.Sanayi Sitesi İzmir-TURKEY

[Tel:232 375 68 25](tel:2323756825) Fax:232 375 68 27

E-mail: [info@ib-er.com](mailto:info@ib-er.com)

## İB-ER MAKİNA OPERATING MANUAL

### **1-SACH FOOT ADAPTOR (E01S-M10 / E01S-M8 & E01T-M10/E01T-M8 &E01AL-M10/E01AL-M8 )**

**Description :** E01... SACH foot adapter has a spherical segmented pyramid with 50mm diameter. It can be attached to foot and adapter by means of setting screws. This product can only be used by person at maximum weight of 100kg/220lbs. Manufacturer Company should be consulted for heavier or more active patients.

**Assembly:** Torque wrench should be used to tighten screws. In order to set the wrench, following power should be applied:

E01s-M8 &E01T-M8=15Nm/11 ft.lbs./133lbs.in

E01s-M10 & E01T-M10 =30 Nm/22,5 ft.lbs./265 lbs.in

Sach foot adapter may be fastened on foot with glue when patient is satisfied with his foot. The screw thread is firmed with a medium to strong adhesive.



### **2- 4 HOLES FIXED CAPPED SOCKET ADAPTOR ( E02S &E 02AL &E02T)**

**Description:** It is an adjustable connection between prosthesis and socket with a screw hole at about 51mm and with pyramid at 50mm diameter that is standard segment for modular foot prosthesis. This adapter is suitable for +20 degree movement. This product can only be used by person at maximum weight of 100kg/220lbs. Manufacturer Company should be consulted for heavier or more active patients.

**Assembly:** Place **E02** adapter and tighten four screws loosely. In order to change its angle, loosen one of the screws and tighten the corresponding screw. After completing adjustment, tighten all four screws with torque wrench.

Torque:15 Nm/11ft.lbs /133 lbs.in.

Secure adjustable screws with a medium- strong adhesive.

When part is desired to be removed or replaced, part may be replaced by removing 2 screws. After completing the process, screws are tightened using torque power as mentioned above.



### **3- 4 HOLES ROTATING SOCKET ADAPTOR ( E02S-2 & E02AL-2 & E02T-2)**

**Description:** It is an adjustable connection between prosthesis and socket with a screw hole at about 51mm and with pyramid at 50mm diameter that is standard segment for modular foot prosthesis. This adapter is suitable for +20 degree movement. It is receiver that can rotate 360 degrees. This product can only be used by person at maximum weight of 100kg/220lbs. Manufacturer Company should be consulted for heavier or more active patients.

**Assembly:** Place E02 adapter and tighten four screws loosely. In order to change its angle, loosen one of the screws and tighten the corresponding screw. After completing adjustment, tighten all four screws with torque wrench. In order to rotate loosen all 4 screws, turn to desired position and retighten all of 4 screws.

Torque: 15 Nm/11ft.lbs /133 lbs.in.

Secure adjustable screws with a medium strength adhesive.

When part is desired to be removed or replaced, part may be replaced by removing 2 screws. After completing the process, screws are tightened using torque power as mentioned above.



### **4- ROTATING, 4-HOLE ADAPTER WITH TOOTH ( E02s-2D )**

**Description:** This part is designed for E02s-2D lower extremities. It is an adjustable connection between prosthesis and socket surrounding at about 51mm screw hole and with pyramid at 50mm diameter which is standard segment of modular foot prosthesis.

This adapter is suitable for +20 degree movement. It is receiver that can rotate 360 degrees. This product can only be used by person at maximum weight of 100kg/220lbs. Manufacturer Company should be consulted for heavier or more active patients.

**Assembly:** Place E02 adapter and tighten four screws loosely. In order to change its angle, loosen one of the screws and tighten the corresponding screw. After completing adjustment, tighten all four screws with torque wrench. In order to rotate loosen all 4 screws, turn to desired position and retighten all of 4 screws.

Torque: 15 Nm/11ft.lbs /133 lbs.in.

Secure adjustable screws with a medium strength adhesive. When part is desired to be removed or replaced, part may be replaced by removing 2 screws. After completing the process, screws are tightened using torque power as mentioned above.



#### **5- 4-HOLE, FIXED PYRAMID SOCKET ADAPTER (E03S &E03AL &E03 T)**

**Description:** This adapter is the connecting adapter between 4 screw adapter (with screw hole perimeter 51mm) and 50mm, 4 screw spherical segment adapter. This application is suitable for +20 degree movement. This product is limited with patients up to 100kg/220lbs. Product should be selected considering extra loads and activity level of the patient.

**Assembly:** Place E03 adapter and tighten four screws loosely. In order to change its angle, loosen one of the screws and tighten the corresponding screw. After completing adjustment, tighten all four screws with torque wrench.

Torque:15Nm/11ft.lbs /133 lbs.in.

Screw thread is secured with a medium strength adhesive.



#### **6- 4- HOLE ROTATING PYRAMID SOCKET ADAPTER ( E03S-2 &E03T-2 )**

**Description:** This adapter is the connecting adapter between 4 screw adapter (with screw hole perimeter 51mm) and 50mm, 4 screw spherical segment adapter. This adapter is suitable for +20 degree movement. It is receiver that can rotate 360 degrees. This product is limited with patients up to 100kg/220lbs. Manufacturer Company should be consulted for heavier or more active patients.

**Assembly:** Place E03-2 adapter and tighten four screws loosely. In order to change its angle, loosen one of the screws and tighten the corresponding screw. After completing adjustment, tighten all four screws with torque wrench.

Torque:15Nm/11ft.lbs /133 lbs.in.

Screw thread is secured with a medium strength adhesive.

Part may be replaced by removing only two screws when it is desired to be removed or replaced. After completion of process, tighten both screws as specified above.



## **7- TUBE ASSEMBLY( E05S-A & B / E05T-A & B/ E05AL-A & B)**

**Description:** It is consisted of combination of approximately 51mm 4 adjustable screws and receiver with external diameter of 30mm. It has standard segment at 50mm diameter and standard pyramid. This tube is suitable for movement at +- 20 degrees. This tube is fixed with a connection adapter of 30mm diameter. This product is limited with patients up to 100kg/220lbs. Manufacturer Company should be consulted for heavier or more active patients.

**Assembly:** Place E05 adapter and tighten four screws loosely. In order to change its angle, loosen one of the screws and tighten the corresponding screw. After completing adjustment, tighten all four screws with torque wrench.

Torque:15 Nm/11ft.lbs /133 lbs.in.

Screw thread is secured with a medium strength adhesive.

For short tubes with 30mm diameter:

Don't clamp the tube in order to cut it at desired length, prefer to use cutting edge. Make sure that cut surface is flat and not cut slanting. Clean the burrs on edges after cutting the tube. Avoid any line formation that causes it to be broken.

Part may be replaced by removing only two screws when it is desired to be removed or replaced. After completion of process, tighten both screws as specified above.



## **8- SHORT TUBE ADAPTER(E06S &E06T & E06AL )**

**Description:** It can be used as standard pyramid adapter for tube with 30 mm diameter. It has 4 adjustable screws at about 51mm diameter. It has standard segment. This adapter is suitable for +20 degree movement. It is receiver that can rotate 360 degrees. This product is limited with patients up to 100kg/220lbs. Manufacturer Company should be consulted for heavier or more active patients.

**Assembly:** Place E06 adapter and tighten four screws loosely. In order to change its angle, loosen one of the screws and tighten the corresponding screw. After completing adjustment, tighten all four screws with torque wrench.

Torque:15 Nm/11ft.lbs /133 lbs.in.

Secure screw thread with medium strength adhesive. This adapter is connected to tube adapter at 30 mm diameter.

Before placing 30mm tube adapter, loosen M5 x 16 socket adapter for two cycles. The surface of tube should be flat and smooth.

The burrs at both sides and out of tube should be cleaned and should be pushed into locking housing.

Torque:10 Nm/7,4ft.lbs/88 lbs.in.

Part may be replaced by removing only two screws when it is desired to be removed or replaced. After completion of process, tighten both screws as specified above.



#### **9 – LONG TUBE ADAPTER (E07S &AL&T)**

**Description:** It can be used as standard pyramid adapter for tube with 30 mm diameter. (As standard, it is the adapter for 47mm) It has adjustable 4 screws at about 51 mm diameter. It has a standard segment employable in a standard pyramid. This adapter is suitable for +20 degree movement. It is receiver that can rotate 360 degrees. This product is limited with patients up to 100kg/220lbs. Manufacturer Company should be consulted for heavier or more active patients.

**Assembly:** Place E07 adapter and tighten four screws loosely. In order to change its angle, loosen one of the screws and tighten the corresponding screw. After completing adjustment, tighten all four screws with torque wrench.

Torque:15 Nm/11ft.lbs /133 lbs.in.

Secure screw thread with medium strength adhesive. This adapter is connected to a tube adapter at 30mm diameter.

Before placing 30mm tube adapter, loosen M5 x 16 socket adapter for two cycles. The surface of tube should be flat and smooth. The burrs at both sides and out of tube should be cleaned and should be pushed into locking housing.

Torque:10 Nm/7,4ft.lbs/88 lbs.in.

Part may be replaced by removing only two screws when it is desired to be removed or replaced. After completion of process, tighten both screws as specified above.



#### **10- ROTATING 3- PRONG SOCKET ADAPTER (E09S&E09 T)**

**Description:** E09 ...Rotating 3- PRONG socket adapter is designed by integrating with sheet socket on thin sheet connection. It is adjustable joint between 50mm diameter standard segment pyramid and prosthesis socket of modular foot prosthesis. It has a standard segment employable with a standard pyramid. This adapter is suitable for +20 degree movement. It is receiver that can rotate 360 degrees. This product is limited with patients up to 100kg/220lbs. Manufacturer Company should be consulted for heavier or more active patients.

**Assembly:** End of socket is matched so as to be far from center and when it is taken to desired position, thin sheet connection is bended carefully.

**Warning:** Misuse and extreme bending may cause cracking of connection.

Before welding the sheets, threads of E09 socket adapter is protected by using fillet material. It is positioned by supporting lower threads and by connecting sheet layers on socket adapter, then threads are cleaned and screws are tightened with torques power.

Torque: 10 Nm/7,4ft.lbs/88 lbs.in.

Place E09 adapter and tighten four screws loosely. In order to change its angle, loosen one of the screws and tighten the corresponding screw. After completing adjustment, tighten all four screws with torque wrench. In order to rotate, loosen all 4 screws and rotate to desired position, then tighten all 4 screws again.



#### **11- ROTATING 3- PRONG SOCKET ADAPTER WITH PYRAMID (E10S-E10T)**

**Description:** E10 ...Rotating 3- PRONG socket adapter is designed by integrating with sheet socket on thin sheet connection. It is adjustable joint between 50mm diameter standard segment pyramid and prosthesis socket of modular foot prosthesis. E10...is a receiver that can rotate 360 degrees.

This product is limited with patients up to 100kg/220lbs. Manufacturer Company should be consulted for heavier or more active patients. .

**Assembly:** Thin sheet connection is curved carefully complying with regular procedure.

**Warning:** Misuse and extreme bending may cause cracking of connection.

E10.. Before placing socket adapter, material is supported by affixing model and support pieces are placed. Then product is fixed with support parts by drilling groove with Fiberglass. .

Sheet anchor is placed on socket adapter. Pyramid should be settled exactly on sheet anchor housing during sheet process and encloses it. Connection screws are tightened with torque power.

Torque:10 Nm/7,4ft.lbs/88 lbs.in.



### **12- 3 PRONG SOCKET ADAPTER WITH FIXED PYRAMID (E11S)**

**Description:** E11...3-PRONG socket adapter with constant pyramid is designed by integrating it with sheet socket through thin sheet connection. It is an adjustable connection between prosthetic socket and standard segment pyramid at 50mm diameter of modular foot prosthesis. E11s... is receiver that can rotate 360 degrees. This product is limited with patients up to 100kg/220lbs. Manufacturer Company should be consulted for heavier or more active patients

**Assembly:** Thin sheet connection is curved carefully complying with regular procedure.

**Warning:** Misuse and extreme bending may cause cracking of connection.

E11.. before placing socket adapter, material is supported by affixing model and support pieces are placed. Then product is fixed with support parts by drilling groove with Fiberglass. .

Sheet anchor is placed on socket adapter. Pyramid should be settled exactly on sheet anchor housing during sheet process and encloses it. Connection screws are tightened with torque power.

NOTE: If the layer is insufficient E11.. socket adapter with constant pyramid can be broken. This prosthesis and its components should be controlled regularly at least once a year. If you consider suggestions carefully, there is no risk.



### **13- 4-PRONG SOCKET ADAPTER WITH CENTRAL HOLE (E12S&AL&T)**

**Description:** E12...It is designed by incorporating 4 hole connection sheet with sheet socket. This adapter has a standard adjustable joint at 50mm diameter and one pyramid. This adapter also has a central hole to ensure exact fit on locking pins at standard dimensions. This application is limited with patients up to 100kg/220lbs. Manufacturer Company should be consulted for heavier or more active patients.

**Assembly:** E12. before placing socket adapter, material is supported by affixing model and support pieces are placed. Then product is fixed with support parts by drilling groove with Fiberglass. Sheet anchor is placed on socket adapter. Pyramid should be settled exactly on sheet anchor housing during sheet process and encloses it. Connection screws are tightened with torque power.



**Warning:** Misuse and extreme bending may cause cracking of connection. If not necessary do not apply bending process.

This adapter can be used for several sockets. E12 socket adapter can also be used for large sockets. By using artificially added sheets with this adapter, pyramid is protected. Supported pyramid from below and sheet layers are connected over model.

Note: This prosthesis and its components should be checked regularly at least once a year. There is no risk if you care to the suggestions.

#### **14- 4- PRONG/LOCKED SOCKET ADAPTER (E12SH&E12ST)**

**Description:** 4- Prong /locked socket adapter is designed by incorporating with socket adapter with layer connection. It has 6 holes around it, operates with locking device. This adapter also has a central hole to ensure exact fit on locking pins at standard dimensions. This adapter has an adjustable joint with standard segment at 50mm diameter. This product is limited with patients up to 100kg/220lbs. Manufacturer Company should be consulted for heavier or more active patients.

**Assembly:** before placing E12SH socket adapter, material is supported by affixing model and support pieces are placed. Then product is fixed with support parts by drilling groove with Fiberglass. Sheet anchor is placed on socket adapter. Pyramid should be settled exactly on sheet anchor housing during sheet process and encloses it. Connection screws are tightened with torque power.

**Warning:** Misuse and extreme bending may cause cracking of connection. If not necessary do not apply bending process.

This adapter can be used for several sockets. E13 socket adapter can also be used for large sockets. By using artificially added sheets with this adapter, pyramid is protected. Supported pyramid from below and sheet layers are connected over model.

Note: This prosthesis and its components should be checked regularly at least once a year. There is no risk if you care to the suggestions.



#### **15- 4 PRONG SOCKET ADAPTER-LARGE (E13S)**

**Description:** E13...It is designed by integrating 4-prong connection sheet with sheet socket. This adapter has a pyramid and a standard adjustable connection at 50mm diameter. This adapter also has a central hole to ensure exact fit on locking pins at standard dimensions.. This product is limited with patients up to 100kg/220lbs. Manufacturer Company should be consulted for heavier or more active patients.

**Assembly:** E13. before placing socket adapter, material is supported by affixing model and support pieces are placed. Then product is fixed with support parts by drilling groove with Fiberglass. Sheet anchor is placed on socket adapter. Pyramid should be settled exactly on sheet anchor housing during sheet process and should enclose it. Connection screws are tightened with torque power.

**Warning:** Misuse and extreme bending may cause cracking of connection. If not necessary do not apply bending process.

This adapter can be used for several sockets. E13 socket adapter can also be used for large sockets. By using artificially added sheets with this adapter, pyramid is protected. Supported pyramid from below and sheet layers are connected over model.



#### **16-DOUBLE ADAPTER ( Pyramid – Pyramid) (E18S-E18T-E18AI)**

**Description:** Double adapter E18 is a connection equipment used between two adapters in modular prosthetic foot.

**Assembly :** Place E18 on the receiver and tighten four screws. In order to change its angle, loosen one screw and tighten the screw at corresponding side. After completion of adjustment, tighten four screws with torques wrench.

Torque:15Nm/11ft.lbs /133 lbs.in.

Part may be replaced by removing only two screws when it is desired to be removed or replaced. After completion of process, tighten both screws as specified above.



#### **17-DOUBLE ADAPTER ( Pyramid – Receiver ) (E21S)**

**Description:** Double adapter E21 ensures connection between two different adapters. One of them is four screwed 50mm spherical modular foot prosthesis and the other is 50mm spherical pyramid foot prosthesis. Double adapter is offered in three different lengths. This product is limited with patients up to 100kg/220lbs. Manufacturer Company should be consulted for heavier or more active patients.

**Assembly:** Fit E21 receiver on pyramid foot prosthesis and upper pyramid part to the receiver of other part and loosely tighten the screws. In order to change its angle, loosen one screw and tighten the screw at corresponding side. After completion of adjustment, tighten four screws with torques wrench.

Torque:15Nm/11ft.lbs /133 lbs.in.

Part may be replaced by removing only two screws when it is desired to be removed or replaced. After completion of process, tighten both screws as specified above.



#### **18-ROTATABLE 4 HOLE ADAPTER ( FIXED PYRAMID) (E30S-E30T)**

**Description:** This adapter is the integrating adapter of 4 screwed adapter (with screw hole circuit of 51mm) with 4 screwed 50mm spherical segment adapter.

This adapter is suitable for movement up to +20 degrees. This product is limited with patients up to 100kg/220lbs. Manufacturer Company should be consulted for heavier or more active patients.

**Assembly:** Place E30 adapter and tighten four screws loosely. In order to change its angle, loosen one of the screws and tighten the corresponding screw. After completing adjustment, tighten all four screws with torque wrench.

Torque:15Nm/11ft.lbs /133 lbs.in.

Part may be replaced by removing only two screws when it is desired to be removed or replaced. After completion of process, tighten both screws as specified above.



#### **19-ROTATABLE 4 HOLE ADAPTER(WITH FIX RECEIVER) (E31S-E31T)**

**Description:** This adapter is the integrating adapter of 4 screwed adapter (with circle of screw hole of 51mm) with 4 screwed 500mm spherical segment adapter. This adapter is suitable for movement up to +20 degrees. This product is limited with patients up to 100kg/220lbs. Manufacturer Company should be consulted for heavier or more active patients.

**Assembly:** Place E31 adapter and tighten four screws loosely. In order to change its angle, loosen one of the screws and tighten the corresponding screw. After completing adjustment, tighten all four screws with torque wrench.

Torque:15Nm/11ft.lbs /133 lbs.in.

Part may be replaced by removing only two screws when it is desired to be removed or replaced. After completion of process, tighten both screws as specified above.



#### **20- SINGLE AXIS FOOT ADAPTER (E50S-E50T)**

**Description:** E50 is designed for lower extremities. It has a pyramid on which 50mm spherical segment adaptor can be connected. It can be assembled on single axis foot through two shafts..



## 21-SOCKET HOLDER BLOCK (E20Thin-E20Thick)

**Description:** E20 product is designed for lower extremities. It is used as connection element between pyramid socket adapter and 4 hole screwed adapter.

This application is limited with patients up to 100 kg/220 lbs. Product should be selected in consideration of extra loads and activity level of the patient.

Torque:10Nm

Note: This prosthesis and components should be checked by using person at least once a year regularly.



## 22-FIX LOCKED, ROTATABLE PYRAMIDE, SINGLE AXIS KNEE (E40)

**Description:** Fixed locked, rotatable pyramid, single axis knee E40 is designed for lower extremities. As standard there is a hole under the knee with 30mm diameter in order to insert it in 30mm tubes. Rotating pyramid on the upper side is mounted with 50mm spherical segment prosthesis. Locking mechanism is controlled via a cord. This knee is produced with high quality aluminum.

This knee is designed specifically for elder and low-active patient. This application is limited with patients up to 100 kg/220 lbs.

### Adjustment of Knee:

1. Locking mechanism is factory adjusted.
2. Take the pyramid section to desired position by loosening or tightening screw at #2 with number 4 Allen wrench.

Torque:10Nm

3. Tighten screws at #2 and #1. This application should be carried finally with an average adhesive.

4. The knee may be unlocked by pulling the cord no: #3 and locked when load is applied.



### 23-FIXED LOCKED SINGLE AXIS KNEE (E41)

**Description:** Fixed locked single axis knee is designed for lower extremities. As standard there is a hole under the knee with 30mm diameter in order to insert it in 30mm tubes.

Upper- rotating part of the knee fits to pyramid and four holed adapter. This knee is produced with high quality aluminum. Maximum flexibility angle of this knee is 210 degrees.

This knee is specifically designed for low activity, elder individuals. This knee is easily controlled and very reliable. This product is limited with patients up to 100kg/220lbs.

#### Assembly: Adjustment of Knee

##### Planar adjustment:

1. Unlock the lock no: 1.
2. Loosen screws no: 2.
3. Remove space by tightening with M6 Allen wrench from below.
4. Tighten screws no: 2 after eliminating the space.

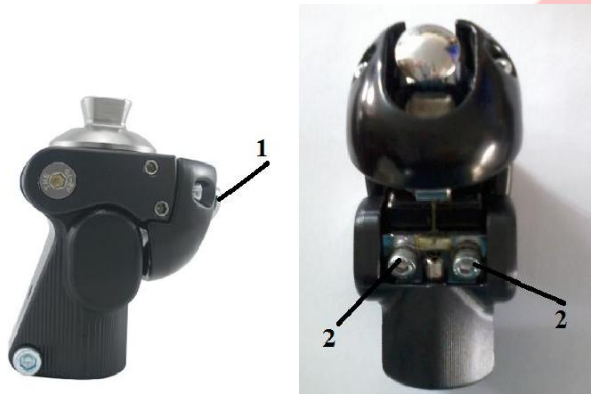
##### Adjustment of Lock

1. Apply load on knee
2. Check if there is any space.

**Accessories used together:** Steel pyramid adapter may be used. This steel pyramid is mounted over knee. M6X can be rotated via 2 screws adjustable to both directions on rotating joint section within +25 degree range. These adjustable screws should be fixed with an average adhesive after final checks are completed. M8x25 screw should be fixed with an average adhesive after adjustments are made with rotating pyramid adapter.

M8X25 torque: 40 NM

NOTE: This knee is not suggested for patients with medium to high activity. This prosthesis and components should be checked for its functions at least once a year with regular intervals by a prosthesis specialist. There is no risk if suggestions are followed properly.



#### **24-E42s-E42T –Single Axis Frictional Knee**

E42- Single axis frictional knee is designed for lower extremities. This knee is consisted of Standard Two Pyramids to be mounted in 2 standard chamber housing. This knee has a brake mechanism and fixed standing phase. This knee is interlocked due to getting twisted when patient remains standing up.

E42s- is made of highly resistant steel and E42t- is made of high resistant titanium. It is not suitable for highly active patients. This application is limited with patients up to 100kg/220lbs.

#### **Adjustment of Knee**

Do not change,- tamper factory settings if possible. The position of load axis of knee is very important for proper functioning and long life of the knee. The joint with tampered setting may be fixed with following conditions. However, this process should be performed by experienced individual knowledgeable about joints.

#### **Adjustment of Knee ( Swinging and Standing positions)**

Knee adjustment (for swinging and stand up positions) should be adjusted by coordinating according to the needs of amputee. Therefore following directions should be read carefully.

**1. Adjustment of swinging position:** Screw #2 should be tightened or loosened until spring #3 is taken to desired position with Extension Assist.

While clockwise turning is increase the tension on spring #3, anticlockwise rotating is decreasing the tension.

**2. Adjustment of swinging position with friction:** In order to achieve desired resistance against movement, loosen or tighten screw #4. Adjustment angle of screw is between 10-20 degrees. Please be careful, extreme loosening of screw may cause sound generation by product. Why too

much tightening may cause activation of brake even if no load is applied.

Clockwise rotation of screw #4 slows down while anticlockwise turning speeds up.

**3. Adjustment of standing position:** Braking impact may be influenced with loosening or tightening of screw #1. Clockwise rotation of screw #1 reduces braking impact while anticlockwise rotation enhances braking impact.

Warning: Please take care, if friction of knee, braking and extension assist is adjusted harmonically according to the needs of patient, high efficiency will be achieved.

Note: Moving metal surfaces should be properly greased.



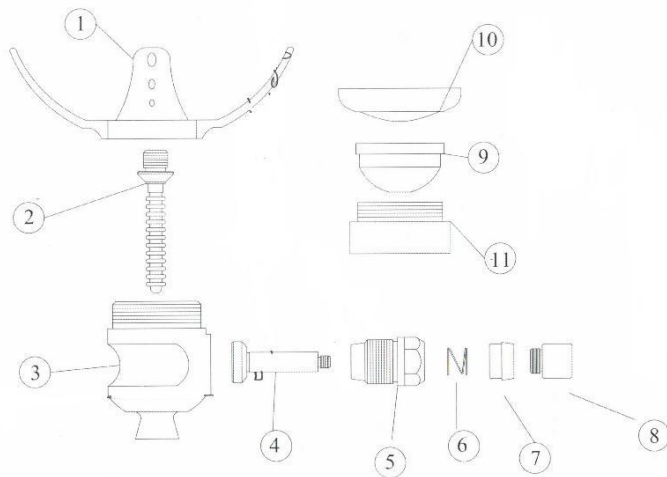
## 25-SHUTTLE LOCK (E70)

E70 product is designed for lower extremities. This product is used as connection element between socket liner and prosthetic socket. The pyramid at the upper side is suitable for 50mm spherical segment adapters. Amputee patient may release the lock on the pin by pushing on the button and socket liner and prosthetic socket become ready for removal.

This application is limited with patients up to 100kg/220lbs. Manufacturer Company should be consulted for heavier or more active patients.

**CAUTION:** Part 5 and Part 7 should be fixed with an average adhesive after final adjustments.

**Note:** This prosthesis and its components should be checked regularly at least once a year by prosthesis specialist.



## WARRANTY

IB-ER LTD is providing warranty for 2 (two) years from the date of production of part and for 1 (one) year after its application to the patient.

This warranty covers only Replacement of Failed Parts after assemblies performed by qualified individuals and competent institutions. This warrant is not applicable to the following:

- (1) Improper use of part, faulty assembly
- (2) Costs arising from replacement of our products with other products.

**WARNINGS:-** It causes injuries in patients over 100 kg.

- In case of feeling any sound or space, apply to the rehabilitation center who installed the foot.